

AUTERRA



L I N C O L N



MERCURY

**Ford Enhanced OBD II
User Guide**

Warnings

The exclamation point within the triangle is a warning sign alerting you of important instructions accompanying the product. Please observe all warnings.



Do not operate the vehicle indoors. A running engine produces lethal carbon monoxide exhaust fumes that can seriously harm or kill you if inhaled. Only run the vehicle motor outdoors with proper ventilation. Many scan tool operations do not require a running motor.



Do not attempt to operate or observe the scan tool while driving a vehicle. Driving requires the full attention of the driver. Operating or observing the scan tool will cause driver distraction and could cause a fatal accident.



Ensure the PC, cable, and OBD II adapter do not interfere with the vehicle controls. A cable dangling in front of the foot pedals, gear shifter, or steering wheel can interfere with vehicle operation and cause a fatal accident. Always ensure the PC, cable, and OBD II adapter are securely fastened out of the way. If the scan tool and PC cannot be safely attached as to not interfere with the vehicle controls, then do not drive the vehicle with the OBD II adapter connected to the vehicle.

Terms of Use

The Software contains proprietary and confidential information that is protected by applicable intellectual property and other laws. You may not modify or sell works based on the Software.

The Software is for your personal use. We grant you a personal and non-exclusive license to use the object code version of the Software on a single Windows-based personal computer; provided that you do not (and do not allow any third party to) copy, modify, reverse engineer, create derivative works from, assign or otherwise transfer any right in the Software; and you will not modify the Software by any means.

Disclaimer

The "Product" is the complete Dyno-Scan for Windows product including hardware, software, user manual, and packaging.

Auterra, LLC assumes no responsibility for any loss or claim by third parties which arise through the use of this Product. Auterra, LLC assumes no responsibility for any damage or loss caused by deletion of data as a result of a Product malfunction. Be sure to backup copies of all important data on other media to protect against data loss.

The Software, and all accompanying files, data and materials, are provided "as is" without warranty of any kind, either expressed or implied, including, but not limited to, the implied warranties of merchantability and fitness for a particular purpose. The entire risk as to the quality and performance of the Software is with you. Should the Software prove defective, you assume the cost of all necessary servicing, repair or correction.

AUTERRA, OR ITS PRINCIPALS, SHAREHOLDERS, OFFICERS, EMPLOYEES, AFFILIATES, CONTRACTORS, SUBSIDIARIES, OR PARENT ORGANIZATIONS, SHALL NOT BE LIABLE FOR ANY INCIDENTAL, INDIRECT OR CONSEQUENTIAL DAMAGES OR OTHER DAMAGES INCLUDING BUT NOT LIMITED TO, LOSS OF PROFITS, LOSS OF REVENUE, LOSS OF DATA, LOSS OF USE OF THE PRODUCT OR ANY ASSOCIATED EQUIPMENT, DOWNTIME AND CONSUMER'S TIME OR FOR BREACH OF ANY EXPRESS OR IMPLIED WARRANTY OR CONDITION, DAMAGE TO THE VEHICLE, BREACH OF CONTRACT, NEGLIGENCE, STRICT LIABILITY OR ANY OTHER LEGAL THEORY RELATED TO THIS PRODUCT.

Copyright

©1998-2008 Auterra, LLC. All rights reserved.

Trademarks

Windows® is a registered trademark of Microsoft Corporation.

Table of Contents

Table of Contents	i
Preface	1
Detecting Supported Systems	1
Supported Systems	2
Requirements	5
Installation	6
Using Ford Enhanced Software	8
Connecting to Vehicle	8
Trouble Codes	9
Clearing Trouble Codes	10

CHAPTER 1

Preface

Congratulations on your purchase of an Auterra's Ford Enhanced OBD II software package. Please take time to read through these operating instructions and become familiar with the operating procedure.

The Ford Enhanced OBD II software is included with the Dyno-Scan™ for Windows software. A unique Ford Enhanced Product Key is purchased to unlock the features.

The enhanced software allows you to:

- Read enhanced diagnostic trouble codes (DTCs) from systems like ABS and airbag
- Display enhanced DTC definitions from Body and Chassis systems
- Turn off the ABS and airbag light

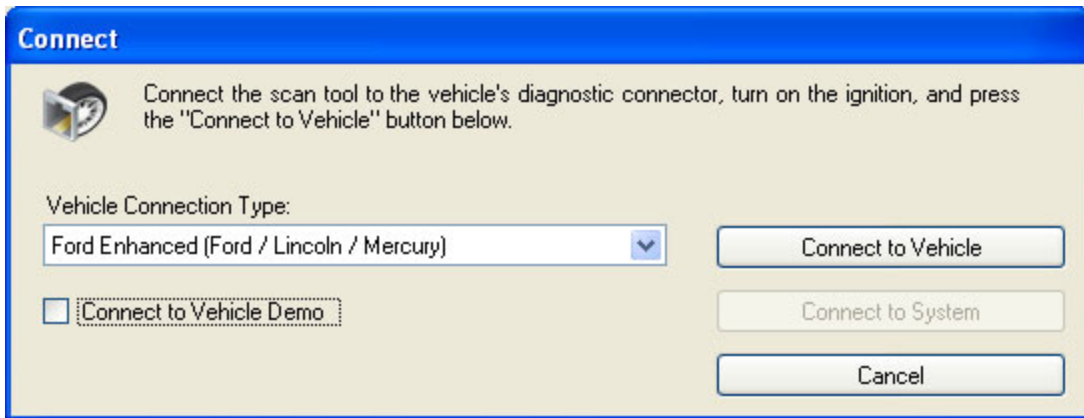
The enhanced upgrade works on many 1996 to 2008 Ford, Lincoln and Mercury vehicles¹. Not every vehicle will support every enhanced system.

Detecting Supported Systems

If you already own a Dyno-Scan for Windows scan tool, it can detect available enhanced OBD II systems on your vehicle using version 8.0.5 or higher software.

Select the File > Connect menu then select Ford Enhanced from the Vehicle Connection Type menu option and press the Connect to Vehicle button. The software will detect all available enhanced OBD II systems on your vehicle to assist in your enhanced OBD II purchasing decision.

¹ The Ford enhanced package does not support Ford's MCAN or UBP protocols.



Note the following when detecting enhanced OBD II vehicle systems:

1. Upgrade to the latest Dyno-Scan for Windows software by download the upgrade from the Auterra web site (www.auterraweb.com).
2. If you already own an Auterra scan tool and it has an older OBD II adapter version, an adapter firmware update or new OBD II adapter may be required before all available vehicle systems are detected. Please contact Auterra for upgrade options available.

Supported Systems

The Ford Enhanced package supports these vehicle system:

- 4x4 Control Module
- ABS (Antilock Brake System)
- Air Suspension / Vehicle Dynamics
- Airbag / SRS (Supplemental Restraint System)
- Alternative Fuel Control Module
- Anti-Lock Brake / Trackion Control Module
- Audio Control Module
- Battery Control Module
- Cellular Phone Module
- Driver Climate-Control Seat Module
- Drivers Door Module
- Drivers Front Seat Module
- Drivers Seat Module
- Electronic Automatic Temperature Control
- Electronic-Controlled Power Steering

- Fire Suppression System Module
- Fuel Control Module
- Generic Electronic Module
- Hybrid Electronic Cluster
- Instrument Cluster
- Left Power Sliding Door Module
- Liftgate / Trunk Module
- Lighting Control Module
- Message Center
- Navigation System
- Next Generation Speed Control Module
- Occupant Classification System Module
- Overhead Trip Computer
- Parking Aid Module
- Passenger Climate-Control Seat Module
- Passenger Front Seat Module
- Passive Anti-Theft System
- Powertrain Control Module
- Rear Electronic Module
- Rear Seat Entertainment Module
- Remote Anti-Theft / Personality Module
- Remote Emergency Satellite Cellular Unit
- Restraint Control Module
- Right Power Sliding Door Module
- Satellite Digital Audio Receiver System
- Security Module
- Steering Column Locking Module
- Supplemental Restraint System
- Tire Pressure Monitor
- Trailer Brake Control Module
- Transmission Control Module

- Vehicle Dynamics Module
- Vehicle Security Module

Requirements

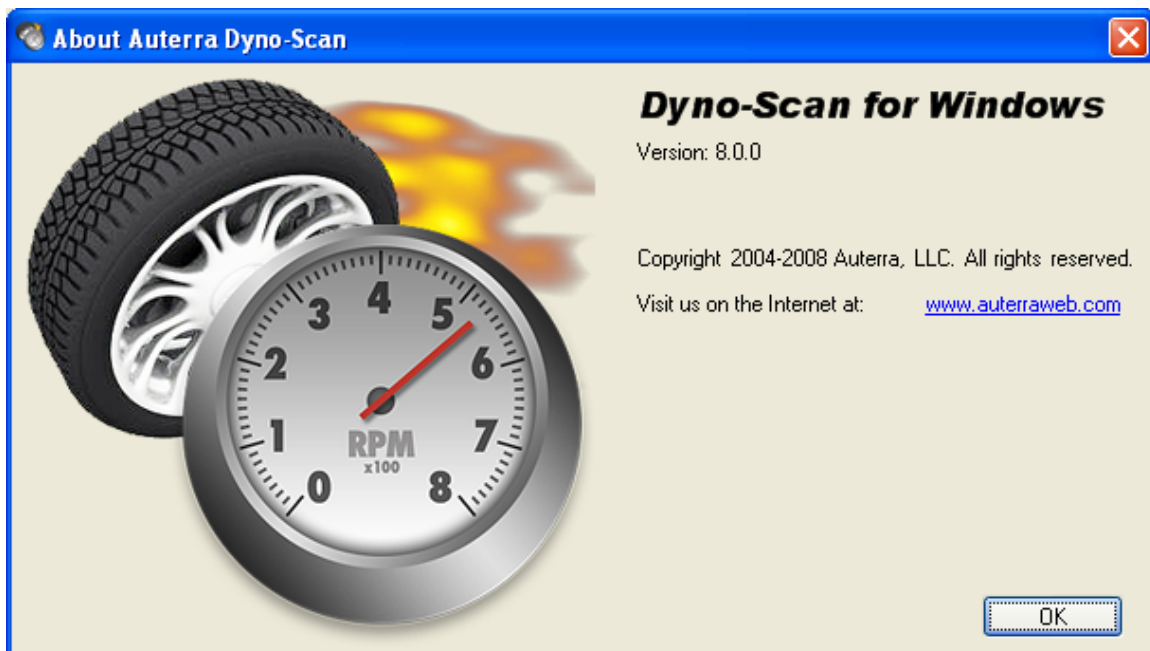
To use the S-203 Ford Enhanced OBD II software package you must have one of these scan tool kits:

- A-302 Dyno-Scan for Windows CAN USB
- A-301 Dyno-Scan for Windows CAN
- A-101 Dyno-Scan for Windows
- A-500 DashDyno SPD
- A-501 DashDyno SPD ProPack

The following Auterra software is required:

- Dyno-Scan for Windows 8.0.5 or higher

Check the Dyno-Scan for Windows version in the Help > About Dyno-Scan...



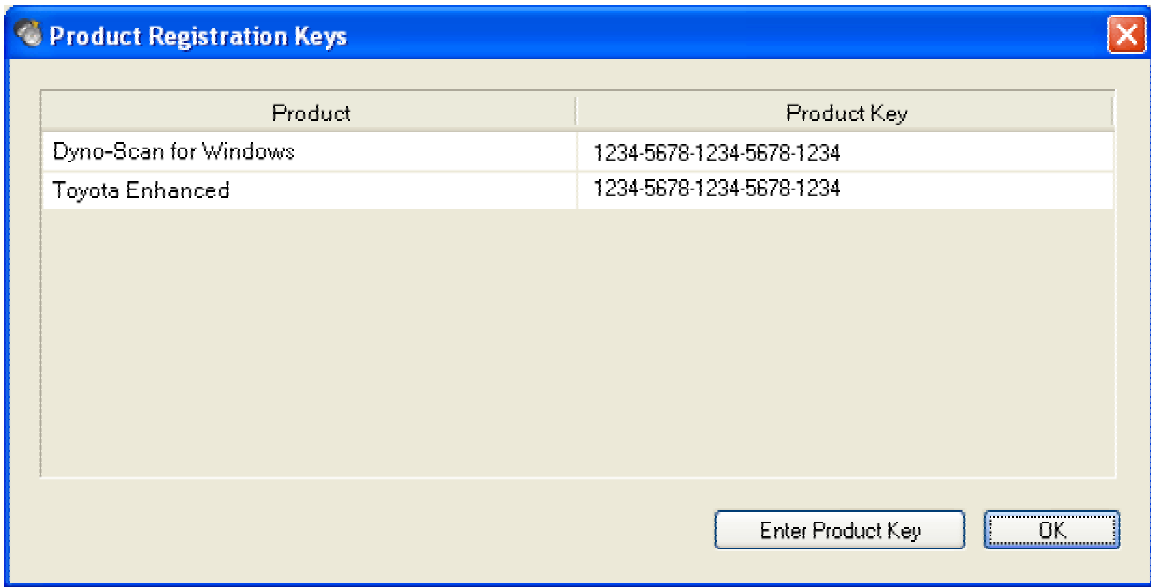
If you have an older version of the Auterra Dyno-Scan for Windows software, just download the latest software from our web site Downloads page.

www.auterraweb.com/downloads.html

Installation

The Ford Enhanced OBD II software is already part of the version 8.0.5 or higher Dyno-Scan for Windows software. There is no CD ROM to be shipped – only a Product Key to unlock the features within the software.

- 1 Purchase the S-203 Ford Enhanced OBD II software from the Auterra web site. You will also need to purchase any Dyno-Scan for Windows or DashDyno scan tool kit unless you already own one.
- 2 Email the following information to Auterra at: support@auterraweb.com
 - Your 4-digit order number used to purchase the S-203 Ford Enhanced software. The order number is emailed to you after placing an order on our web site.
 - Your existing Dyno-Scan for Windows Product Key.
 - Your complete name and mailing address.
- 3 Auterra Support will respond to your email with a Ford Enhanced Product Key. **Please keep this key in a safe place and do not lose it.**
- 4 Start the Dyno-Scan for Windows software.
- 5 Go to the Help > Product Registration Keys... menu option.
- 6 Press the Enter Product Key button and enter the Ford Enhanced Product Key.



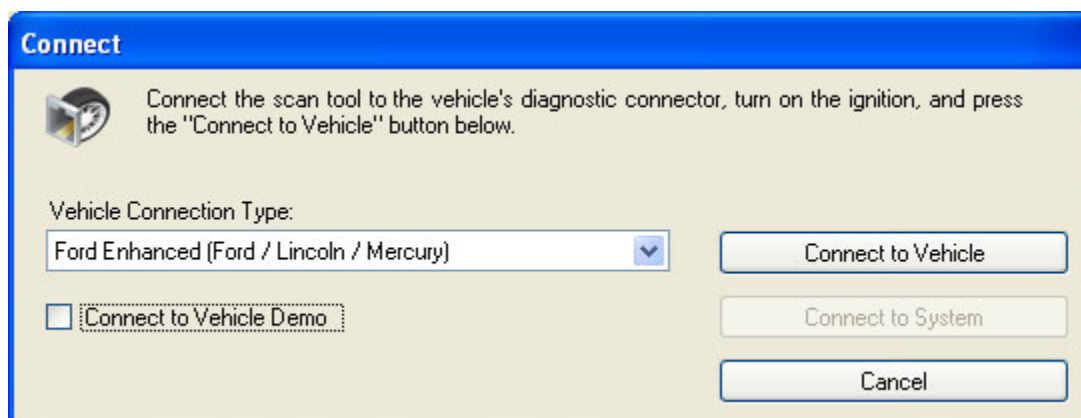
7 Congratulations! Your Ford Enhanced software is now ready for use.

Using Ford Enhanced Software

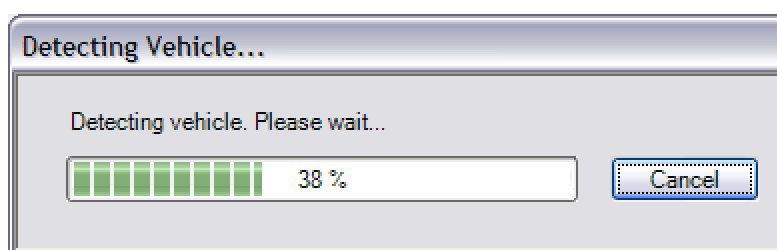
Using your Ford Enhanced OBD II software is easy, and this section shows you how.

Connecting to Vehicle

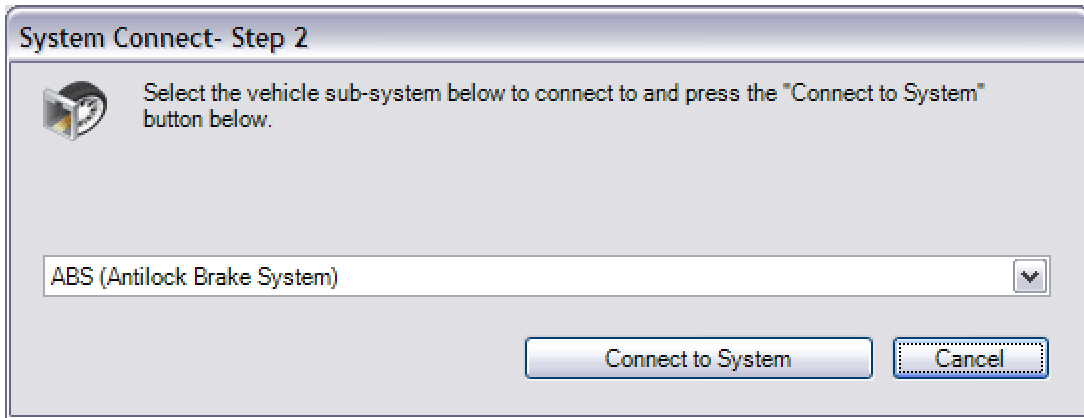
When connecting to a vehicle, the Connect dialog's Vehicle Connection Type dropdown will show a "Ford Enhanced (Ford / Lincoln / Mercury)" menu option. Select this option and press the "Connect to Vehicle" button.



The software will now detect the systems available on the vehicle.



After the vehicle is detected, select the system to connect to and press the "Connect to System" button.



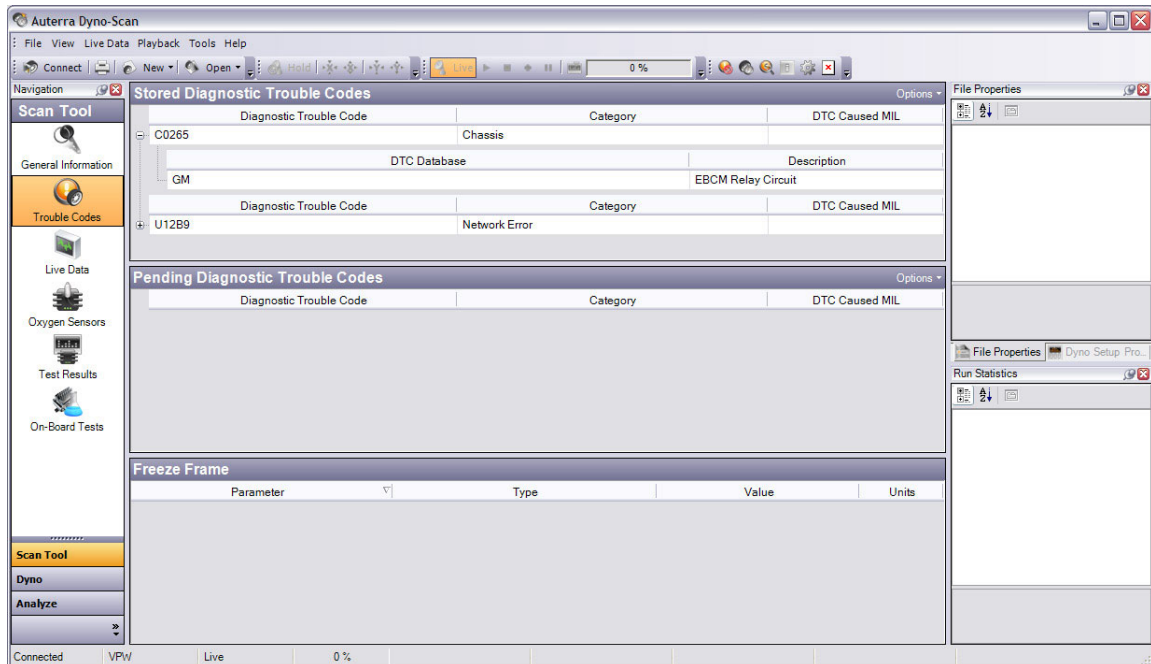
You are now connected to the selected Ford Enhanced system.

Once connected to the vehicle, you can switch systems quickly.

- 1 Select File > Connect.
- 2 Press the “Connect to System” button. This button is only available after the vehicle has been successfully detected.
- 3 On the “System Connect – Step 2” dialog, select the system and press “Connect to System”.

Trouble Codes

The Stored Diagnostic Trouble Codes pane will show any DTCs stored on the enhanced system.



Clearing Trouble Codes

Select the Tools > Clear DTCs menu option to clear codes and turn off any dashboard light (e.g. ABS or airbag). Clear DTCs will only clear codes for the currently connected enhanced system.

Please note the following when clearing DTCs:

- 1 Some vehicles require the ignition key to be turned off then on again before the code is cleared.
- 2 Some codes cannot be cleared while the vehicle is running.
- 3 The dashboard light and diagnostic trouble code may not be clearable until the system repair has been completed.